

# MORE THAN JUST PUMP SALES

## WHAT WE OFFER

### FIELD SERVICES

- System Monitoring & Troubleshooting
- Laser Alignment
- Vibration Analysis
- Pump & Lift Station Maintenance

### REPAIR SERVICES

- Authorized Repair Center
- Vertical Turbine Repair
- Full-Service Machine Shop with Dynamic Balancing Capabilities
- Recertification Test Tank

### SHOP SERVICES

- Engineered Pump Packages
- Fully Customizable Prepackaged Pumping Systems with piping, valves, and controls.
- Fiberglass Lift Stations

### CONTROL & INTEGRATION

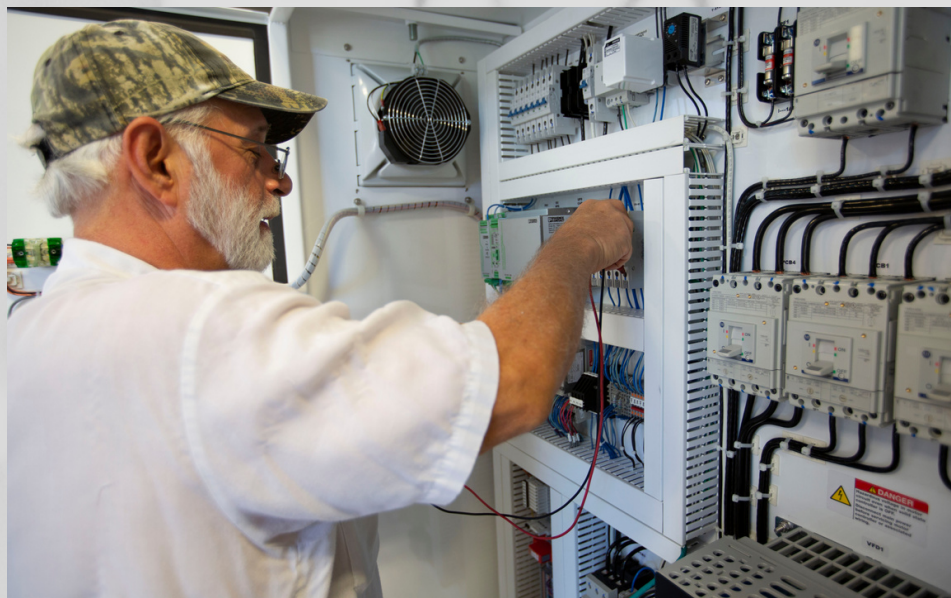
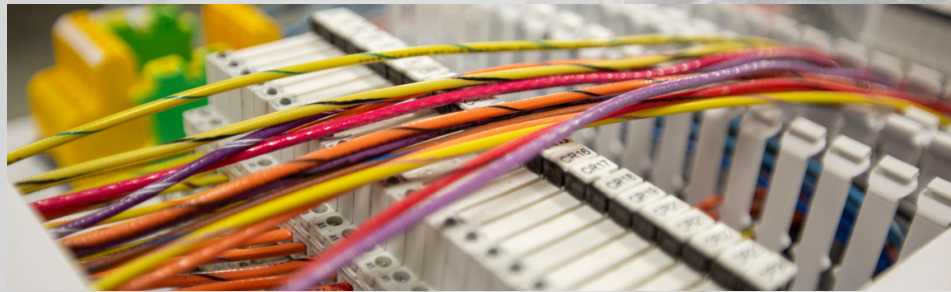
- Unitron Controls®
- Retrofit & Replacement
- SCADA Programming & Integration
- RTU Systems & Remote Monitoring
- Service Contracts & Hosting Programs
- Controls Maintenance Programs



# BARNEY'S PUMPS

## MUNICIPAL PRODUCTS

THREE GENERATIONS OF PUMP SALES,  
SOLUTIONS, AND SERVICES





**PENTAIR**  
AURORA • HYDROMATIC • FAIRBANKS NIJHUIS

Complete line of split-case, end suction, vertical turbine, dry pit, and submersible pumps for potable and sewage handling applications.



**HOMA**  
PUMP TECHNOLOGY

Air-filled, submersible, sewage-handling pumps in wet and dry pit configurations.



**KSB**

Engineered pumping and mixing equipment for water, wastewater, and stormwater applications.



**Howden**

**Turblex** single-stage and **Spencer** multi-stage centrifugal blowers.



**ROOTS**

Positive displacement blowers and centrifugal compressors.



**FLOWSERVE**

Mechanical seals for all applications available in cartridge, component, and split configurations.

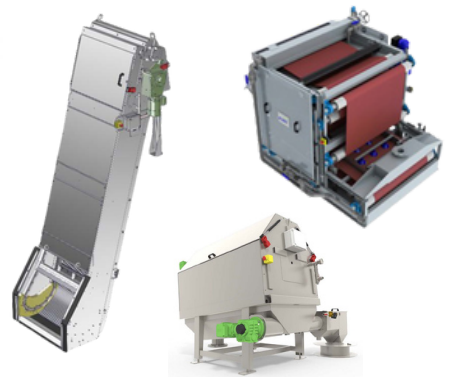


**LOBEPRO**  
ROTARY PUMPS

Positive displacement rotary lobe pumps.

**Aqualitec**  
Screening Equipment

Innovative wastewater screening equipment and sludge treatment solutions.



**CASCADE**  
CASCADE PUMP COMPANY

Engineered, high capacity, mixed and axial-flow pumps.

**VAPEX**  
ENVIRONMENTAL



Radical odor control technology that treats odors and remediates surface FOG (fat, oil, & grease).

**UNITRON CONTROLS**

In-house design and construction of control panels with solutions that include PLC, VFD, SCADA, and RTU.



**ci-Text**



Configurable remote telemetry system.

